

WOODLAND REGENCY

Turkey





Bodrum

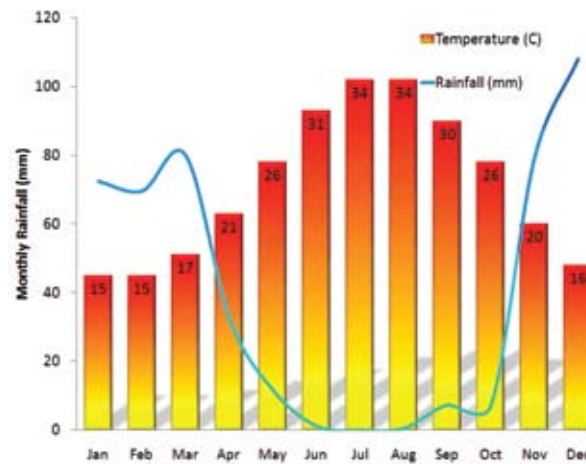
The Bodrum Peninsula in south-west Turkey literally has something for everyone. From pretty fishing villages and idyllic secluded bays, to the energetic bustle of Bodrum's Bar Street and the world famous open air Halikarnas Disco, it is easy to see why it has become know as 'the St. Tropez of Turkey'.

Bodrum provides an eclectic mix of modern shopping and entertainment with outstanding historical sites including St. Peters Castle and Halicarnassus Mausoleum, one of the seven wonders of the ancient world.

Turkey is fast becoming one of the world's most sought after destinations with a relatively low cost of living, a truly fantastic year-round climate, modern infrastructure and enough sport, leisure and entertainment for almost every type of vacation.



Woodland Regency





Woodland Regency

David Lloyd Resorts Woodland Regency Villas are located in Konacik, which is in great demand by locals and investors due to its proximity to Bodrum Town Centre and its location right on the arterial road connecting Bodrum with the Peninsular's other villages. All villas are set in the heart of tranquil woodlands consisting of pine and olive trees.

Two large swimming pools on each corner of the complex give the freedom to enjoy one of the many features of Woodland Regency.

Another unique feature of this site is an exclusive Club House on the south side of the resort. With all the Spa and fitness facilities, the Club House represents an oasis where you can escape, shape your body in the fitness centre, play a game of billiards or just unwind in the sauna or Turkish hamam.



Vita Park Golf Resort and Bodrum Golf Club are located close by within the Peninsular



Tennis courts and coaching are available at the Vita Park Golf Resort and many of the local hotels.



Water Sports – windsurfing, sailing, snorkelling, and scuba diving just 5 minutes from the resort



Two large pools with terrace, sun loungers and children's pool



There are over 10, 5-star retreats in Bodrum



International cuisine, street cafes and bars are just 5 minutes away in Bodrum. Local cafes and dining are just a short walk away.



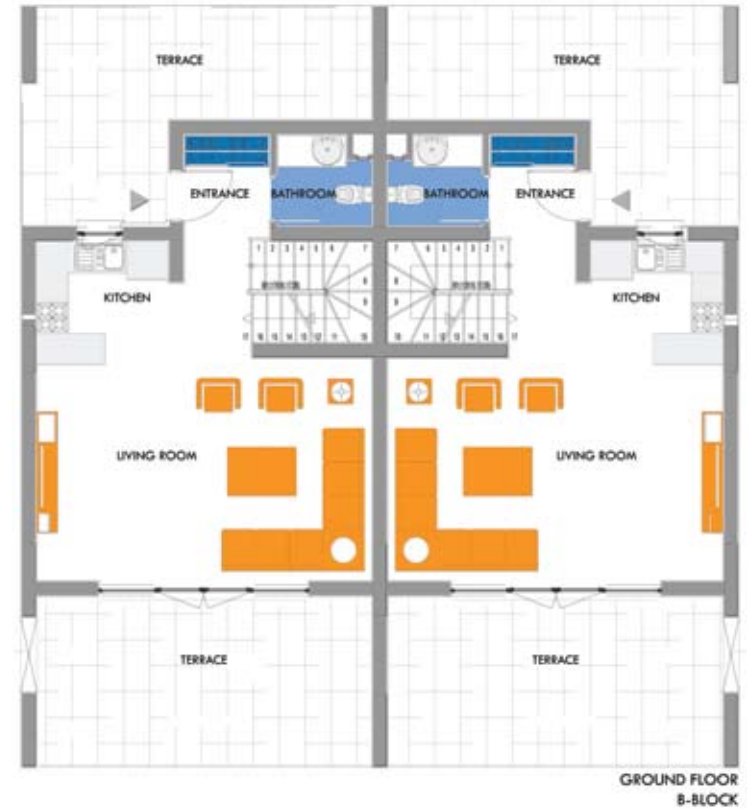
Bodrum International Airport - 15 minutes



Duplex Villa

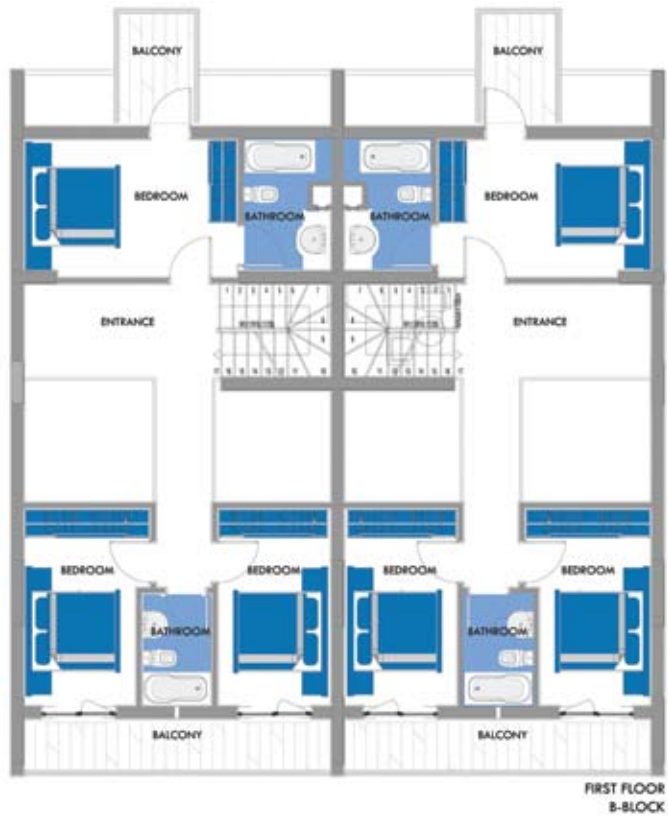
3 Bedroom, 3 Bathroom
143.5 sqm Internal, 53.5 sqm External

All buildings within Woodland Regency have been designed with maximum privacy in mind, offering contemporary living and an idyllic lifestyle, with 24 hour security and free wireless internet.



Layout & measurements are for representation only and may differ from finished dimensions.





What's Included?

- Fully-fitted open-plan kitchen
- Bathroom with Jacuzzi
- Two large communal pools with separate children's pool
- Poolside sun terraces with sun loungers
- Golf putting area and outdoor playground
- Free wireless internet
- Entrance reception and 24 hour security
- Central satellite TV with major European channels

Layout & measurements are for representation only and may differ from finished dimensions.



info@davidlloydresorts.com
www.davidlloydresorts.com

